

# MONTHLY MEMBERSHIP PROGRESS REPORT

LOCATION NEPAL

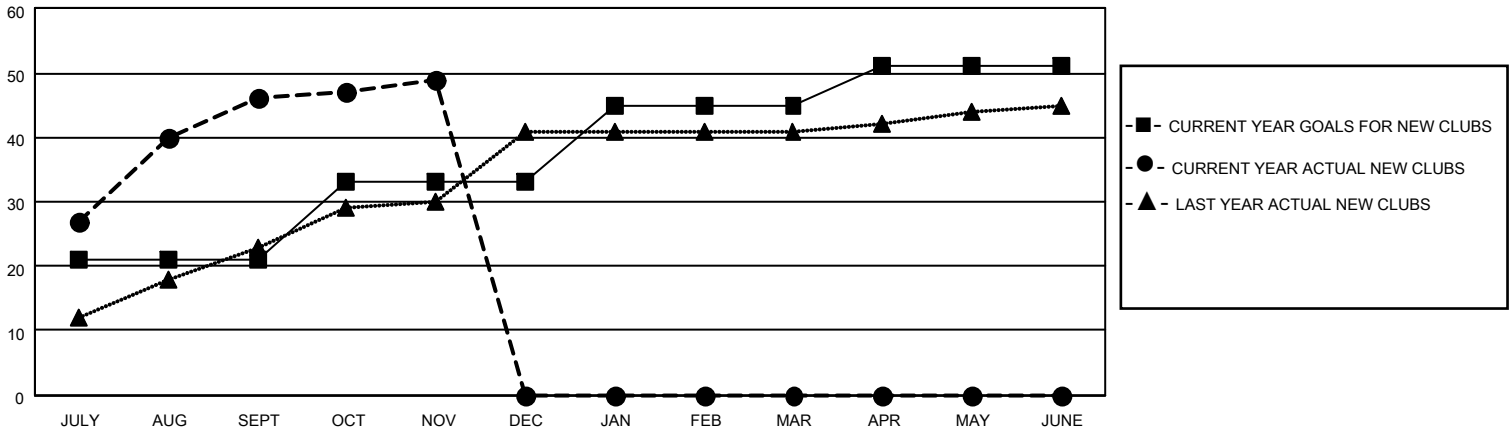
District 325A1

Results as of: 11/30/2021

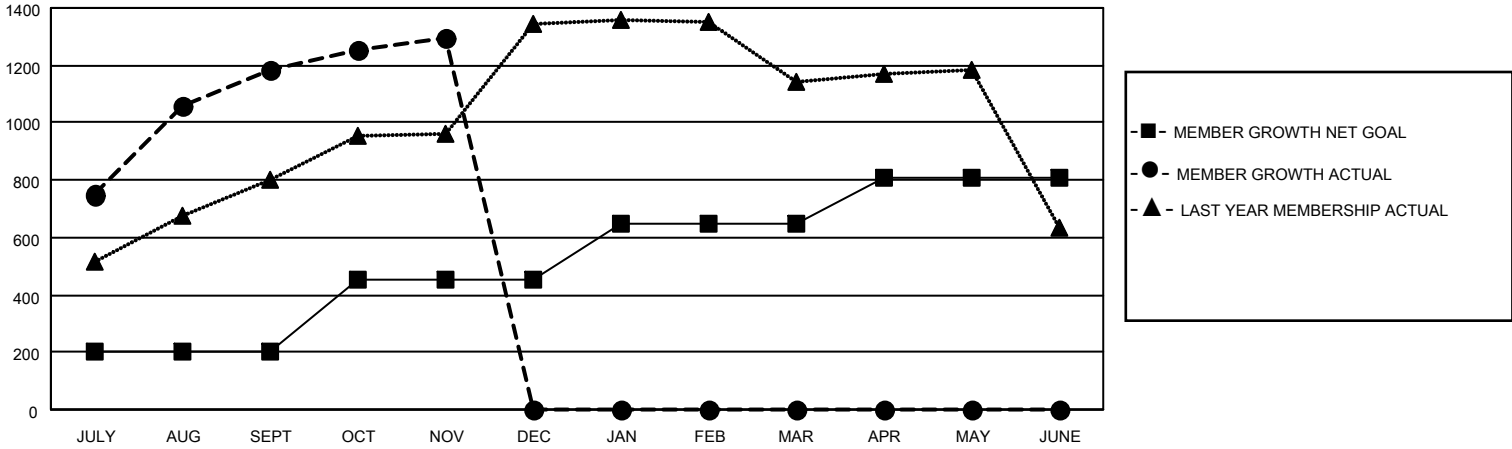
Clubs			
RESULTS FOR 2021-2022			
QUARTER	NEW CLUB GOAL	NEW CLUBS	DROPPED CLUBS
JULY/AUG/SEPT	21	46	4
OCT/NOV/DEC	12	3	0
JAN/FEB/MAR	12	0	0
APR/MAY/JUNE	6	0	0

Members			
RESULTS FOR 2021-2022			
QUARTER	MEMBER GROWTH NET GOAL	MEMBER GROWTH ACTUAL	DROPPED MEMBERS ACTUAL (including transfers)
JULY/AUG/SEPT	200	1394	192
OCT/NOV/DEC	250	154	47
JAN/FEB/MAR	200	0	0
APR/MAY/JUNE	155	0	0

**GOALS AND ACTUAL NEW CLUBS CUMULATIVE**



**GOALS AND ACTUAL MEMBERS CUMULATIVE**



**DROPPED CLUBS: 4**

153 CLUBS OF 356 ADDED 1 OR MORE NEW MEMBERS

GENDER DISTRIBUTION

DROPPED MEMBERS

DECEASED	4
CLUB CANCELLED	67
OTHER	168
<b>TOTAL</b>	<b>239</b>

MALE	5,657 (69.79%)
FEMALE	2,449 (30.21%)
NON BINARY	0 (0.00%)
PREFER NOT TO ANSWER	0 (0.00%)

[CLICK HERE FOR CUMULATIVE MEMBERSHIP DATA](#)

TOTAL FAMILY UNIT MEMBERS	6,182
FAMILY MEMBERS PAYING HALF DUES	4,361